



# **Speereo Voice Launcher**

For Windows Mobile

**v. 1.0**

# Table of contents

<b>Application Description</b>	<b>3</b>
<b>Program Launch</b>	<b>4</b>
<b>Settings</b>	<b>6</b>
<b>Buttons</b>	<b>6</b>
<b>Application</b>	<b>7</b>
<b>Web</b>	<b>8</b>
<b>Speereo Speech Recognition Technology</b>	<b>9</b>

## Application Description

Launch any application, access internet and much more with Speereo Voice Launcher!

Everything can be done with voice commands!

Speereo Voice Launcher is designed to launch applications, web pages, services from Today plugin, from floating bar (on top of any application running) or by simple voice command. It is an innovative application that will free your hands from tapping through small menus and your mind from trying to remember where application is located, what address to input to look up the weather or sports section in your favorite blog.

All you have to do now – press and hold one button and SAY WHAT YOU WANT! Speereo Voice Launcher will start an application or open a web page that you need in no time!

It is very simple to use: press defined by you button and Speereo Voice Launcher floating bar will pop up in front of any application you have open.

You can press & hold predefined button for Speech Recognition Engine (that thing that will recognize your voice command) and say, for example, 'What's the weather today?' and Speereo Voice Launcher will open web-browser to a web page with weather forecast. Or perhaps, say 'What are my plans?' and Speereo Voice Launcher will open a calendar where you keep you appointments.

No limits, choose what you want to launch or see with YOUR OWN command! Feel free to express yourself.

### **USEFUL TIPS:**

You can set any speech commands you desire, but if you want your commands to be recognized with best accuracy, please follow advice below:

- a) Do not set commands that sound similar for different applications;
- b) If your command differs from another by one or two syllables, speech recognition system will have difficulties in recognition and can launch another from desired application. Therefore if you encounter such problem, simply think of a synonym to set command and reset it.
- c) Avoid abbreviations and shortcuts in speech commands. In other words, don't set a command that you yourself can pronounce different from time to time.
- d) It will be better not to have many short commands (one-word command with one or two syllables in it).

## Program launch

You can start Speereo Voice Launcher in two ways:

- 1) As a floating bar on top of any running application.

Floating bar activation button is set in Windows Mobile 'Settings' menu as described [below](#). Once the button is pressed, Speereo Voice Launcher floating bar appears on top of running application (Fig. 1).

In other words, you can launch Speereo Voice Launcher floating bar without switching to Windows Mobile 'Start' menu – from any running application.

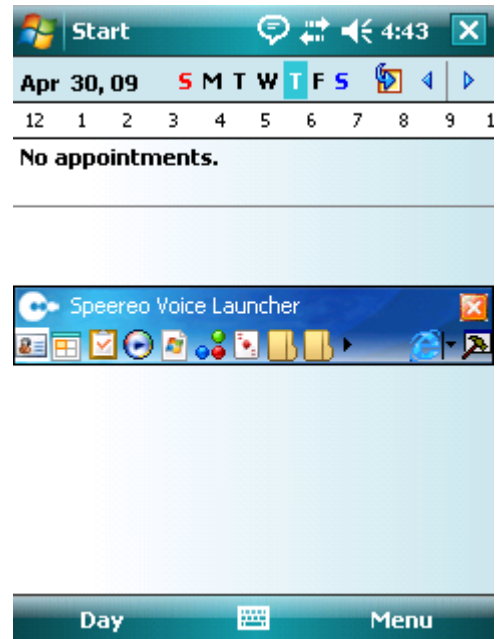


Fig. 1

- 2) As a standard 'Today' plugin.

In this setting Speereo Voice Launcher integrates into the list of Windows Mobile 'Today' plugins. In order to turn Speereo Voice Launcher 'Today' plugin go to 'Settings' and choose 'Today'. There you can activate or deactivate Speereo Voice Launcher 'Today' plugin or set its position on your screen (Fig. 2).

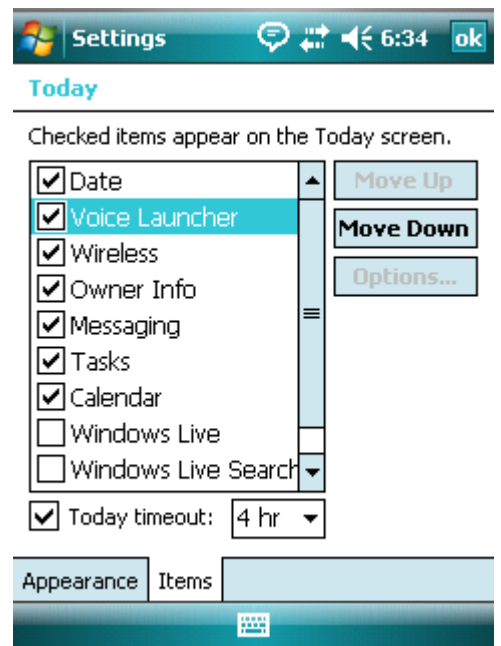


Fig. 2

Once you set Speereo Voice Launcher 'Today' plugin, it will appear on your Windows Mobile home screen (Fig. 3).

You can start applications listed in Speereo Voice Launcher 'Today' plugin using your keyboard joystick or tapping their icons by stylus.

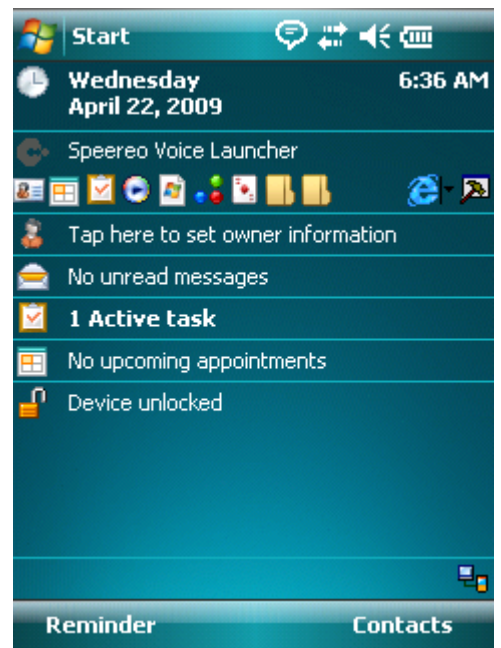



Fig. 3

## Settings

In order to access the application settings, press icon  (Launcher Options) located on the right of Speereo Voice Launcher 'Today' plugin.

Launcher Options menu is divided into several tabs.

## Buttons

In this menu you can set activation keys for Speereo Speech Engine (recognition of speech commands) – top line – and Speereo Voice Launcher floating bar – button below (Fig. 4).

To set an activation key for Speech Recognition Engine you can either choose from the drop-down menu with predefined hardware buttons or set your own.

In order to set your own hardware button for Speech Recognition Engine press 'Grab key' on the right from drop-down menu.

A pop-up message will appear offering you to choose desired button. Press and hold desired hardware button until the pop-up message disappears.

Now you are set – chosen button will be listed in drop-down menu as set for Speech Recognition Engine activation key.

In order to set an activation key that will launch Speereo Voice Launcher floating bar press 'Set floating bar key' and a screen with standard Windows Mobile key settings will appear (Fig. 5). Here you can assign a key that will be launching the Speereo Voice Launcher floating bar.

**NOTE:** In order to avoid conflicts with other software in Windows Mobile standard hardware settings menu set a hardware button you have defined for Speech Recognition Engine activation to 'Do nothing'.

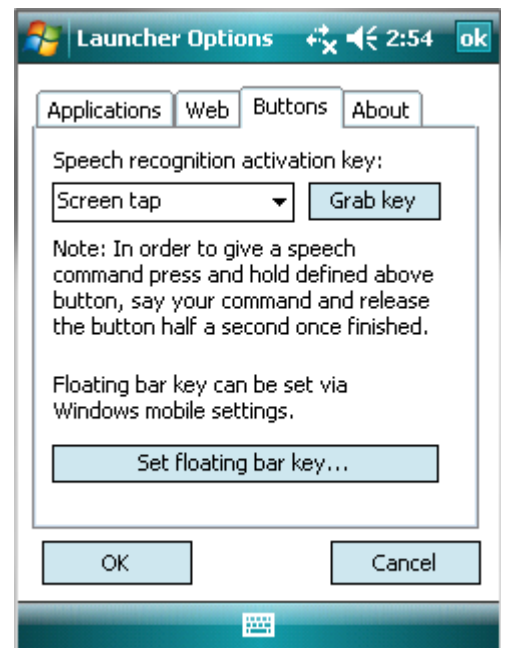


Fig. 4

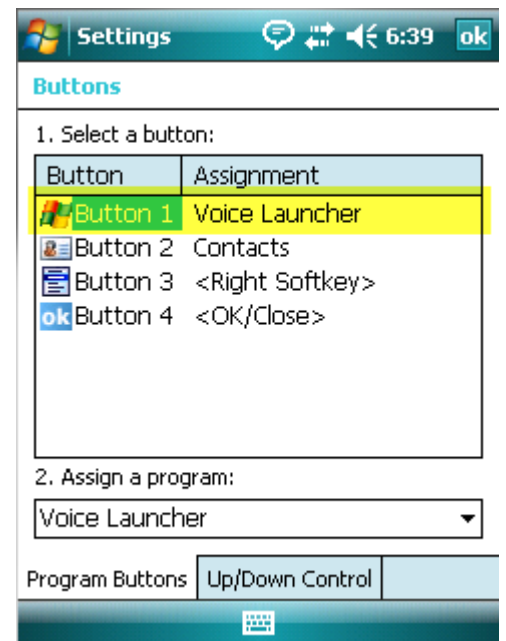


Fig. 5

## Applications

In order to set your own applications to be launched via Speereo Voice Launcher, go to 'Applications' tab in Launcher Options (Fig. 6).

You will see a default list of applications. You can either delete, set another order or edit this list.

In order to set your own application to launch via Speereo Voice Launcher press 'Add' button on the bottom of the screen.

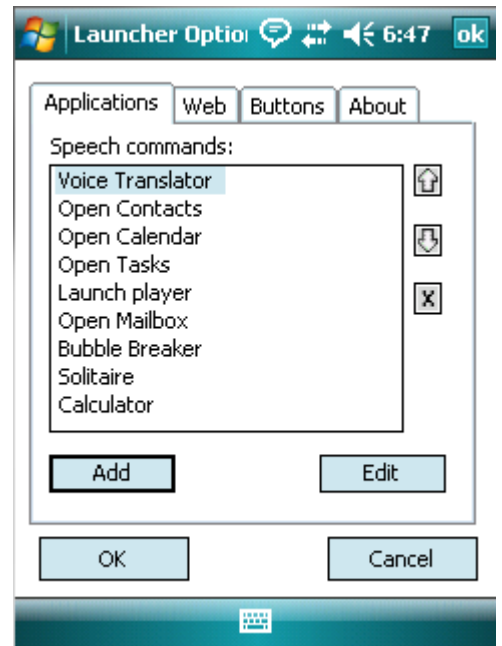


Fig. 6

Window 'Add Item' will pop up (Fig. 7).

'Item type' drop down menu allows you to choose whether you are creating an application shortcut or a web page that Speereo Voice Launcher will open for you.

'Application path' – press button on the right and browse to an application executable file. Once set, you will see a system path to your application.

'Description' – add a short description of the application chosen.

If you wish to see a chosen application shortcut in Speereo Voice Launcher 'Today' plugin and floating bar, mark the checkbox 'Make item visible on Launcher window'.

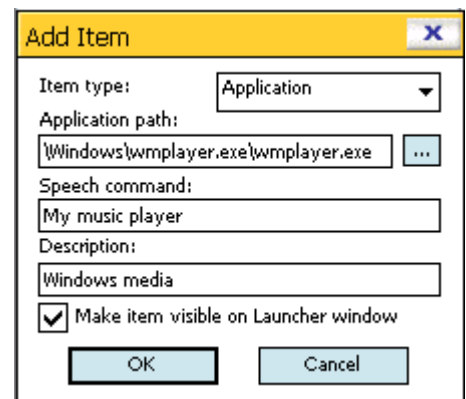


Fig. 7

'Speech command' – write down a speech command that Speereo Voice Launcher Speech Recognition Engine will associate with your application.

**EXAMPLE:** when you want to see your plans to tomorrow you need to open your calendar. Therefore you can either set speech command to 'Launch calendar' or 'Calendar' or 'My plans' or 'What will happen'. Use your imagination, feel comfortable, say what you want.

## Web

In order to set your own web pages to be launched via Speereo Voice Launcher, go to 'Web' tab in Launcher Options (Fig. 8).

You will see a predefined list of speech commands that launch various web pages. You can either delete, set another order or edit this list.

In order to set a web page which you want to launch via Speereo Voice Launcher press 'Add' button on the bottom of the screen.

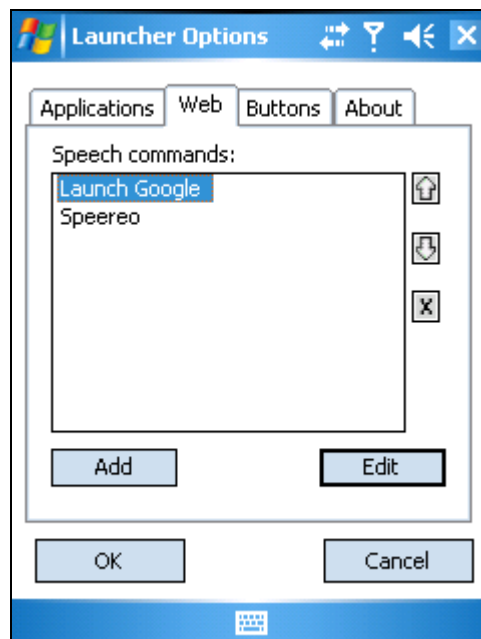


Fig. 8

Window 'Add Item' will pop up (Fig. 9).

'Item type' – choose if you are creating a web page command or application that Speereo Voice Launcher will open for you.

'URL' – you can input a desired address manually or press the button on the right and choose from the list of visited pages. Once set, you will see a URL address to your web page.

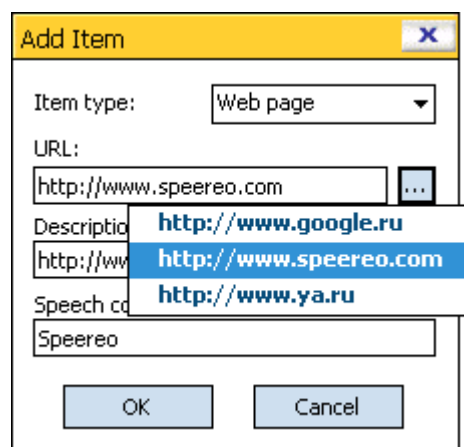


Fig. 9

**NOTE:** Also, if you need to input an address that doesn't appear in 'Visited pages' list, type it in your browser address bar and copy URL via 'Ctrl + C' on your keyboard. Then open 'Add item' in 'Web' tab, set cursor to URL line, bring up system keyboard and press 'Ctrl + V'. Your address will be pasted in URL line.

'Description' – write down short description of chosen web page.

'Speech command' – write down a speech command that Speereo Voice Launcher Speech Recognition Engine will associate with chosen web page.

**EXAMPLE:** when you need to see a page with your city weather forecast, set your command to 'Weather' or 'What is the weather' or 'What is going on in the skies' – feel free to express yourself!

# Speereo Speech Recognition Technology

Speereo Voice Translator™ utilizes technology of speaker-independent speech recognition and speech compression that have been developed by Speereo Software UK Ltd.

Advantages of Speereo Software's speech technology:

1. High recognition accuracy (up to 99.9%). More details on tests are available on request.
2. Robustness with regard to noise and speech signal recording conditions. Opportunity for use in cars (there is a special version of the speech engine for cars), in the street, etc.
3. Speaker-independence, no need for adapting to a speaker.
4. Ruggedness with regard to speakers' different accents and articulation manner.
5. Option of a quick change in the vocabulary and support for a large vocabulary (currently 150,000 words).
6. Opportunity for a quick readjustment to other languages; the technology allows for a simultaneous support of several languages.
7. Means for modeling the dialog between the system and the user and the execution of certain actions by the system.
8. Independence of the description of the model of a dialog from the working language of the system.
9. The semantic block of the system supports multiple synonymous commands in the model of a dialog.
10. Compact size of the speech engine (less than 2 MB) and a high performance speed.
11. Ability to port the engine to a wide variety of platforms with a processor performance of less than 40 MIPS and different architecture.
12. Speech compression of a high degree. The compression algorithm allows to convert a one-minute audio record from the original PCM format (16 bit, 8 kHz) to 18 KB (mode 1) or to 10.5 KB (mode 2). One minute in the original format occupies 960 KB.

## For software and device developers

We have developed Speech Engine including speaker-independent recognition of speech commands and speech compression, based on our proprietary technologies. Speech Engine can be used by any application with the help of special API (SEAPI). At present Speech Engine works on MS Windows 98/Me/NT/XP platform, Windows Mobile 2003SE/5.0/6.0/6.1, as well as on other embedded devices. Speech Engine has been ported to a wide variety of processors of MIPS, x86, ARM, StrongARM, Hitachi SH3, Hitachi SH4, Toshiba TM39XX, and others.

Speereo Software UK can port Speech Engine together with a required list of speech commands to your device in a short time. We invite software and device developers to cooperate. For more information, please contact us by e-mail: [speech@speereo.com](mailto:speech@speereo.com).